



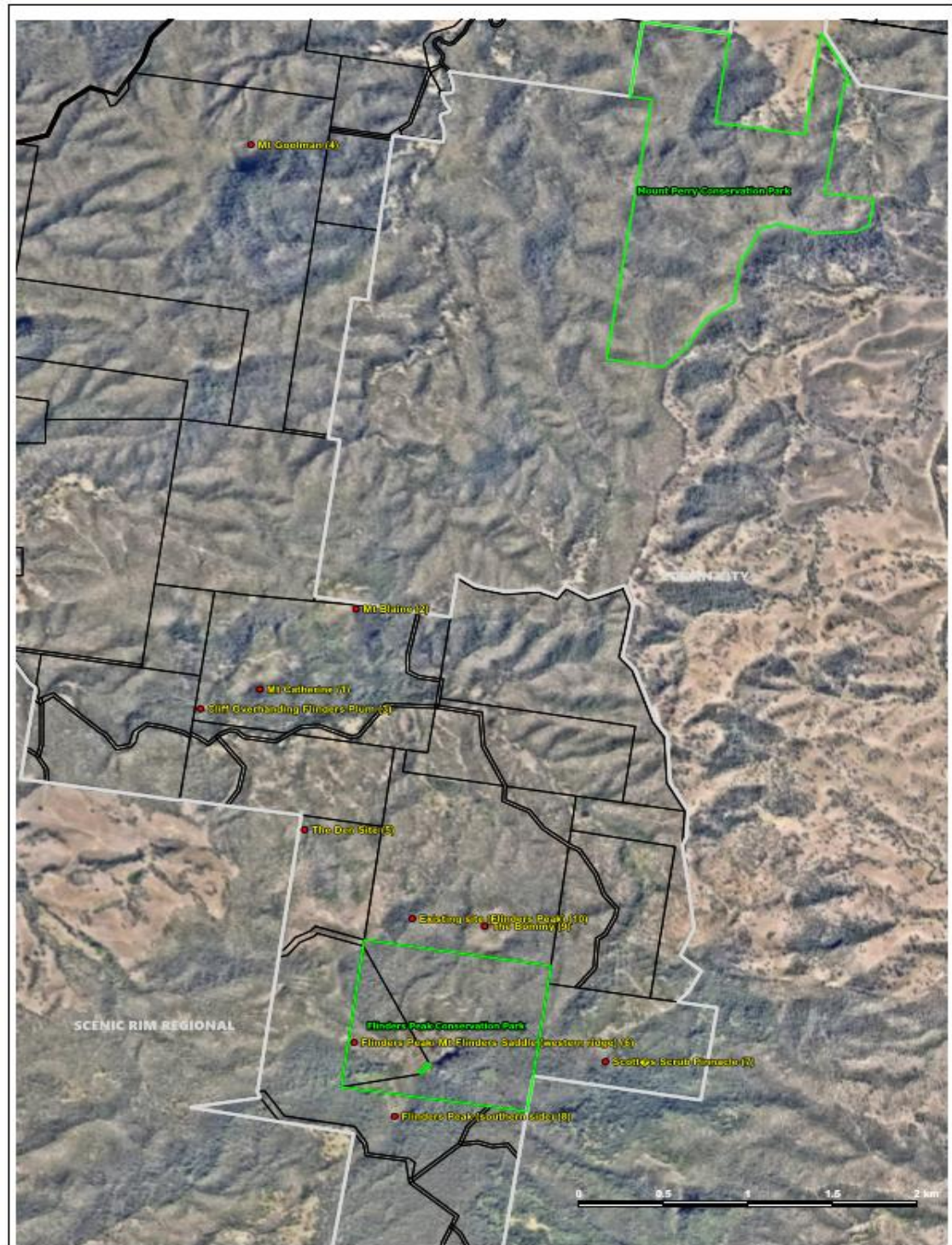
Ipswich City Council  
Investigative Study into the Suitability of  
Rock Climbing, Bouldering & Abseiling  
**Flinders-Goolman Conservation Estate**

Desktop Analysis  
16-12-2017

## Table of Contents

<b>Site Locations Provided by ICC.....</b>	<b>3</b>
<b>Audit.....</b>	<b>4</b>
Location 1 – Mt Catherine.....	4
Location 2 – Mt Blaine.....	6
Location 3 – Rocky Outcrop Over Flinders Plum Picnic Area.....	7
Location 4 – Mt Goolman.....	8
Location 5 - The Den.....	8
Location 6 - Flinders Peak/ Mt Flinders Saddle (Western Ridge) .....	9
Location 7 – Scotts Scrub Pinnacle .....	11
Location 8 – Flinders Peak (Southern Side) .....	13
Location 9 – The Bommy .....	15
Location 10 – Rocky Outcrop.....	16

## Site Locations Provided by ICC





## Audit

### Location 1 – Mt Catherine

#### Inspection Methods

- Visual line of sight
- Drone Footage

Suitable for  
Rock  
Climbing

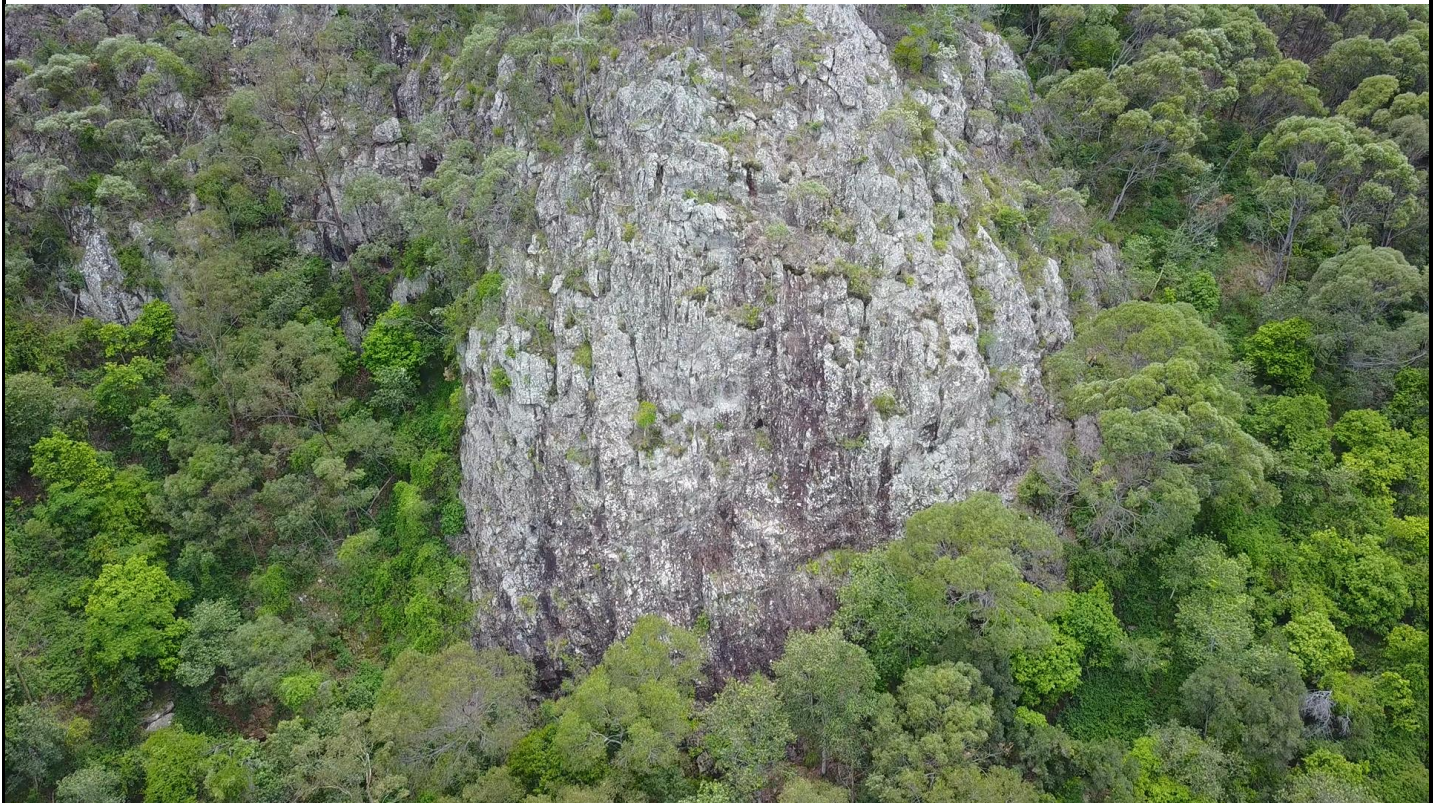
#### Site Attributes

- Vertical / Slab Climbing
- Trad / Sport Climbing / Abseiling
- Approximate height 15m – 25m
- Easy access could be obtained
- Bolting and climbing infrastructure would need to be installed

This site has good potential for easy to medium grades of climbing. Easy access from Flinders Plum Picnic Area could be obtained to the base of the cliff.

Further investigation would be recommended

#### Images









## Location 2 – Mt Blaine

### Inspection Methods

- Visual line of sight
- Drone Footage

Not Suitable  
for Rock  
Climbing

### Site Attributes

- Approximate Height 5m – 10m
- difficult access

Not suitable due to small height of cliff and difficulty to access

No further investigation would be recommended

### Images





### Location 3 – Rocky Outcrop Over Flinders Plum Picnic Area

#### Inspection Methods

- Visual line of sight
- Drone Footage

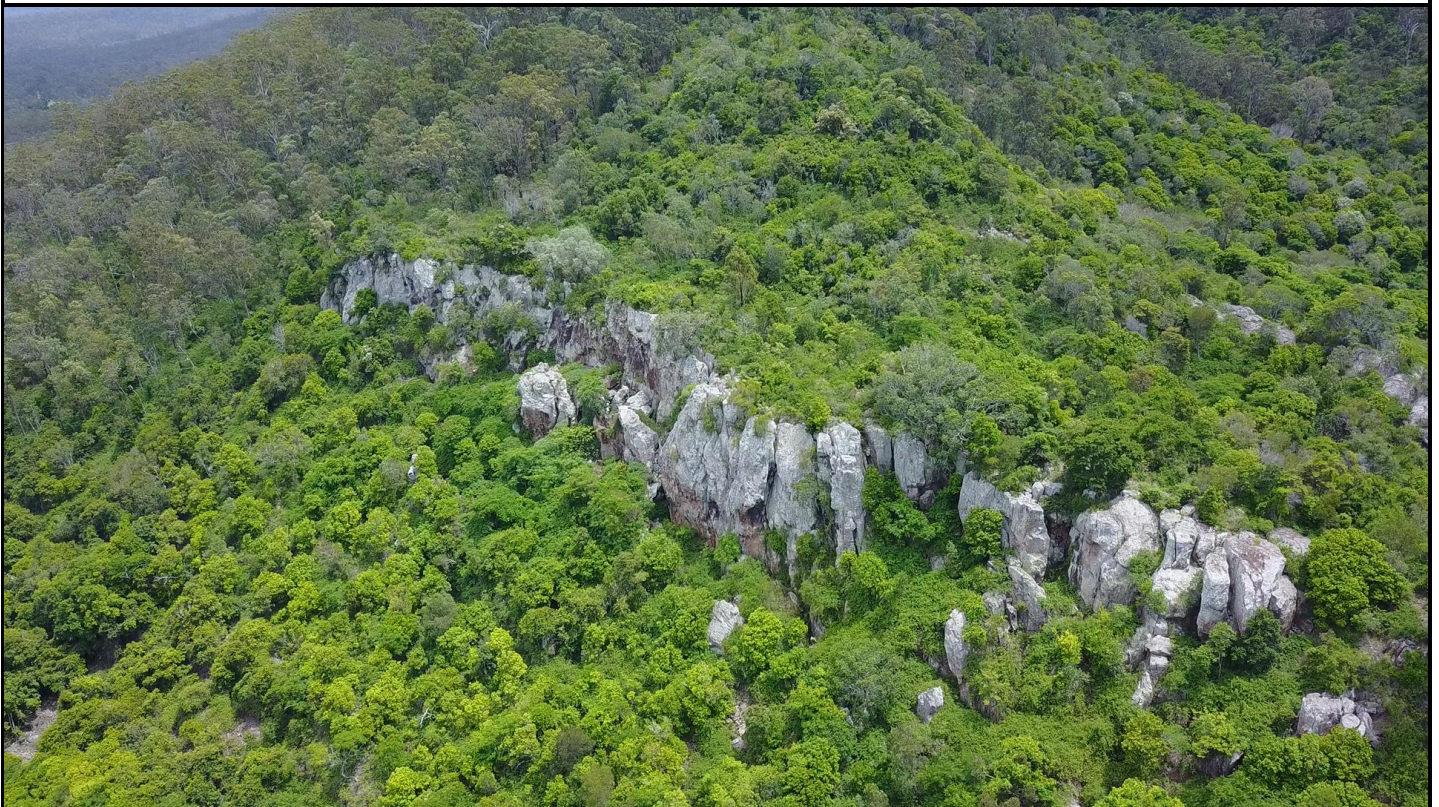
Not Suitable  
for Rock  
Climbing

#### Site Attributes

- Approximate Height 5m – 10m
- difficult access
- Minimal rock on Council Land

Not suitable due to small height of cliff  
Majority of the rock is not on ICC land

#### Images



Location 4 – Mt Goolman		
Inspection Methods - Not Assessed	Not Suitable for Rock Climbing	Site Attributes - Difficult access
Images		
Location 5 - The Den		
Inspection Methods - Visual line of sight - Site Visit	Not Suitable for Rock Climbing	Site Attributes - Approximate Height 5m – 10m - Sport climbing only
Minimal climbs at this site, some bolting has already occurred, known rock wallaby den		
Images		



## Location 6 - Flinders Peak/ Mt Flinders Saddle (Western Ridge)

### Inspection Methods

- Visual line of sight
- Site Visit
- Drone

Suitable for  
Rock  
Climbing

### Site Attributes

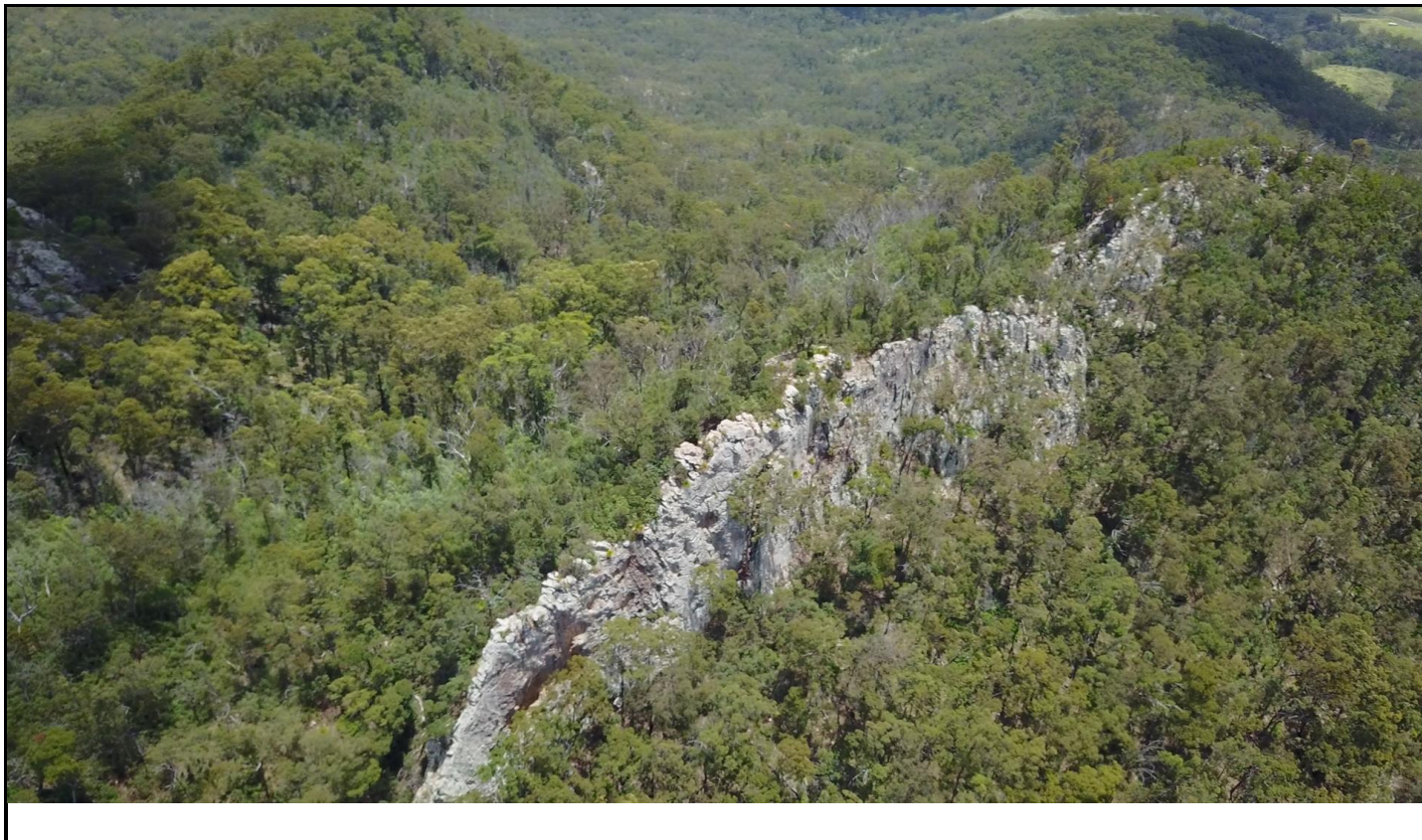
- Vertical Climbing
- Trad / Sport Climbing / Abseiling
- Approximate Height 20m – 30m
- Easy access could be obtained along current summit walking trail
- Bolting and climbing infrastructure would need to be installed

Potential for good climbing on both sides of this ridgeline

### Images









## Location 7 – Scotts Scrub Pinnacle

### Inspection Methods

- Visual line of sight
- Drone

Suitable for  
Rock  
Climbing

### Site Attributes

- Vertical / Slab Climbing
- Trad / Sport Climbing
- Approximate Height 15m – 30m
- Easy access could be obtained from current access roads
- Bolting and climbing infrastructure would need to be installed

Great potential for easy to hard vertical climbing. Access to cliff could come in from any direction to avoid impacting the dry rainforest in this area

### Images









## Location 8 – Flinders Peak (Southern Side)

### Inspection Methods

- Visual line of sight

Drone

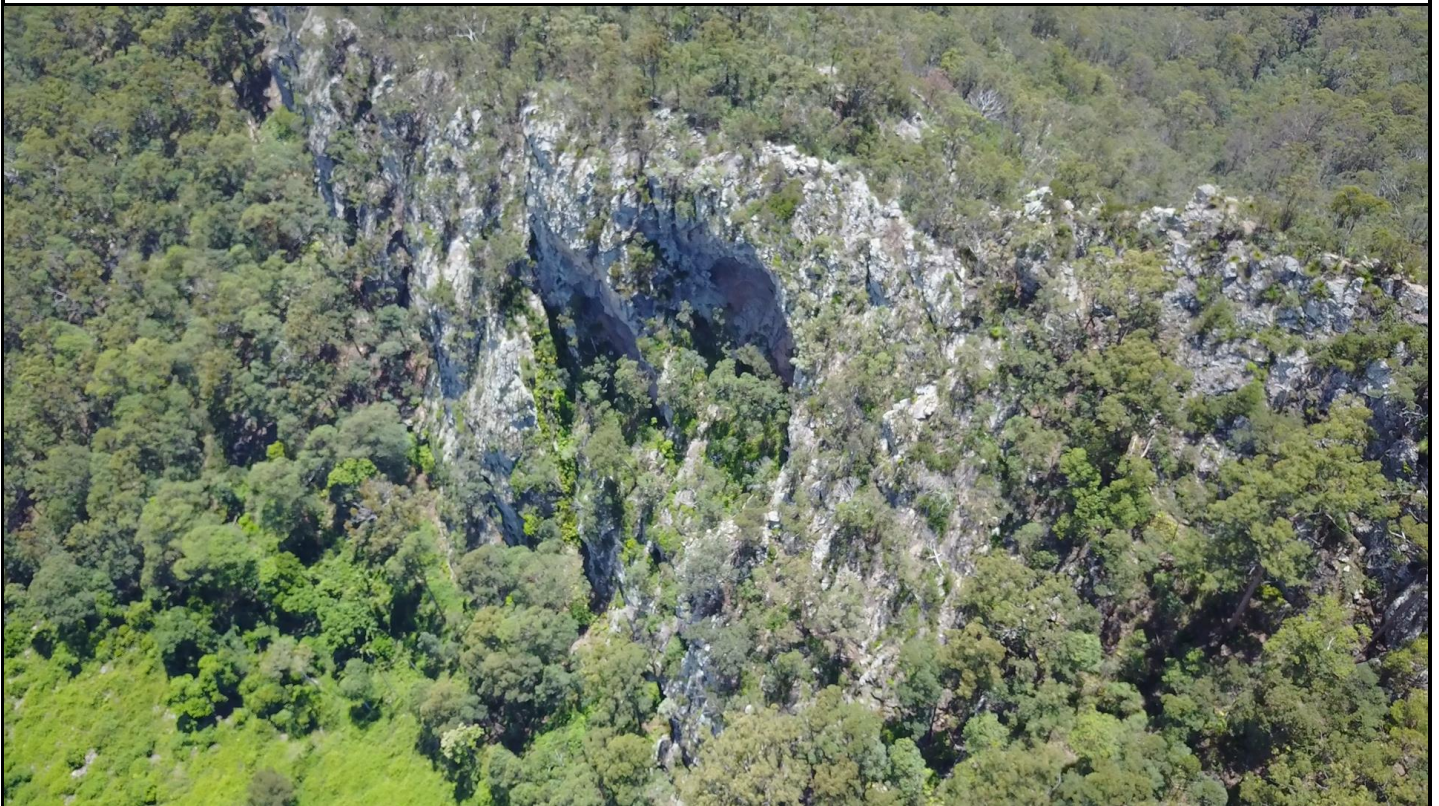
Suitable for  
Rock  
Climbing

### Site Attributes

- Steep / Roof Climbing
- Sport Climbing
- Approximate height 15m – 45m
- Access trails have already been developed
- Bolting and climbing infrastructure has already been installed

Excellent steep/roof climbing already established and bolting infrastructure in place.

### Images









Location 9 – The Bommy		
Inspection Methods - Visual line of sight - Site Visit	Not Suitable for Rock Climbing	Site Attributes - Approximate Height 5m – 10m - Trad / Sport climbing
Potentially unsuitable; rock wallaby feeding habitat.		
Images		

Location 10 – Rocky Outcrop		
Inspection Methods - Visual line of sight - Site Visit	Not Suitable for Rock Climbing	Site Attributes - Approximate Height 5m – 10m - Trad / Sport climbing
Potentially unsuitable; rock wallaby feeding habitat.		
Images		